

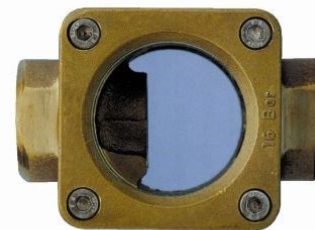
Plain Flow Indicator

DS1941



Features:

- Plain spout cast in the body
- Special version available for use with steam and condensate
- Made with borosilicate glass for good long-term visibility
- Ideal for visual checks on flow, presence, colour, and condition of a liquid



Description:

The Plain flow indicator is ideally suitable for visual checks on flow, presence, colour and condition of a liquid, where there is intermittent flow, partially filled pipes or entrained air, thanks to a plain spout cast in the body. A special version is available for use with steam and condensate, this version is made with borosilicate glass, ensuring good long-term visibility.

SKU	Description
FFSI0008	Stainless Steel with a 2" ANSI 150 Flanged Connection
FFSI0009	Stainless Steel with a 3" ANSI 150 Flanged Connection
FFSI0010	Stainless Steel with a 4" ANSI 150 Flanged Connection
FFSI0011	Stainless Steel with a 6" ANSI 150 Flanged Connection
FFSI0012	Gunmetal with a ½" BSPP Connection
FFSI0013	Gunmetal with a ¾" BSPP Connection
FFSI0014	Gunmetal with a 1" BSPP Connection
FPI15B	Gunmetal with a ½" BSPP Connection and Borosilicate Glass (for use with steam and condensate)
FPI15S	Stainless Steel with a ½" BSPP Connection
FPI20B	Gunmetal with a ¾" BSPP Connection and Borosilicate Glass (for use with steam and condensate)
FPI20S	Stainless Steel with a ¾" BSPP Connection
FPI25B	Gunmetal with a 1" BSPP Connection and Borosilicate Glass (for use with steam and condensate)
FPI25S	Stainless Steel with a 1" BSPP Connection
FPI40S	Stainless Steel with a 1½" BSPP Connection

General Note

TT Electronics reserves the right to make changes in product specification without notice or liability. All information is subject to TT Electronics' own data and is considered accurate at time of going to print.

TT Electronics | Roxspur Measurement & Control
2 Downgate Drive, Sheffield, South Yorkshire, S4 8BT, UK | Ph: +44 (0) 114-244-2521
www.ttelectronics.com | RoxspurSales@ttelectronics.com